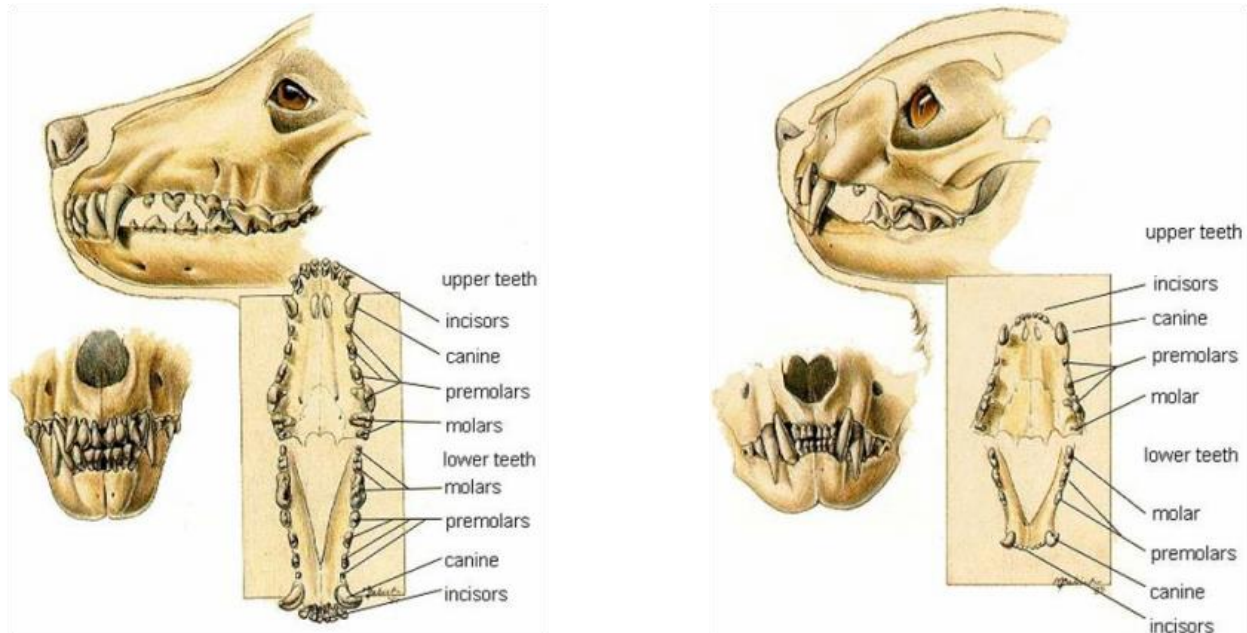


How We Estimate Your Pets Age Based On The Teeth

When a pet's age is in question, one of the best tools we have at estimating their age are the teeth. It is not a perfect system by far, and in older pets that have above or below average dental health it may not be accurate. But for the most part it can serve as a general guide to place pets in certain age ranges.



<i>ESTIMATED AGE</i>	<i>CAT'S TEETH</i>	<i>DOG'S TEETH</i>
2-4 weeks	Deciduous (baby) incisors coming in	No noticeable tooth growth
3-4 weeks	Deciduous (baby) canines coming in	Deciduous (baby) canines coming in
4-6 weeks	Deciduous (baby) premolars coming in on lower jaw	Deciduous (baby) incisors and premolars coming in
8 weeks	All deciduous (baby) teeth are in	All deciduous (baby) teeth are in
3½ - 4 months	Permanent incisors coming in	No noticeable permanent tooth growth
4-5 months	Permanent canines, premolars, and molars coming in	Permanent incisors coming in; some growth of premolars and molars
5-7 months	All permanent teeth in by 6 months	Permanent canines, premolars, and molars coming in; all teeth in by 7 months
1 year	Teeth white and clean	Teeth white and clean
1-2 years	Teeth may appear dull with some tartar build-up (yellowing) on back teeth	Teeth may appear dull with some tartar build-up (yellowing) on back teeth
3-5 years	Teeth show more tartar build-up (on all teeth) and some tooth wear	Teeth show more tartar build-up (on all teeth) and some tooth wear
5-10 years	Teeth show increased wear and disease; pigment visible on gums	Teeth show increased wear and disease
10-15 years	Teeth are worn and show heavy tartar build-up; some teeth may be missing	Teeth are worn and show heavy tartar build-up; some teeth may be missing